

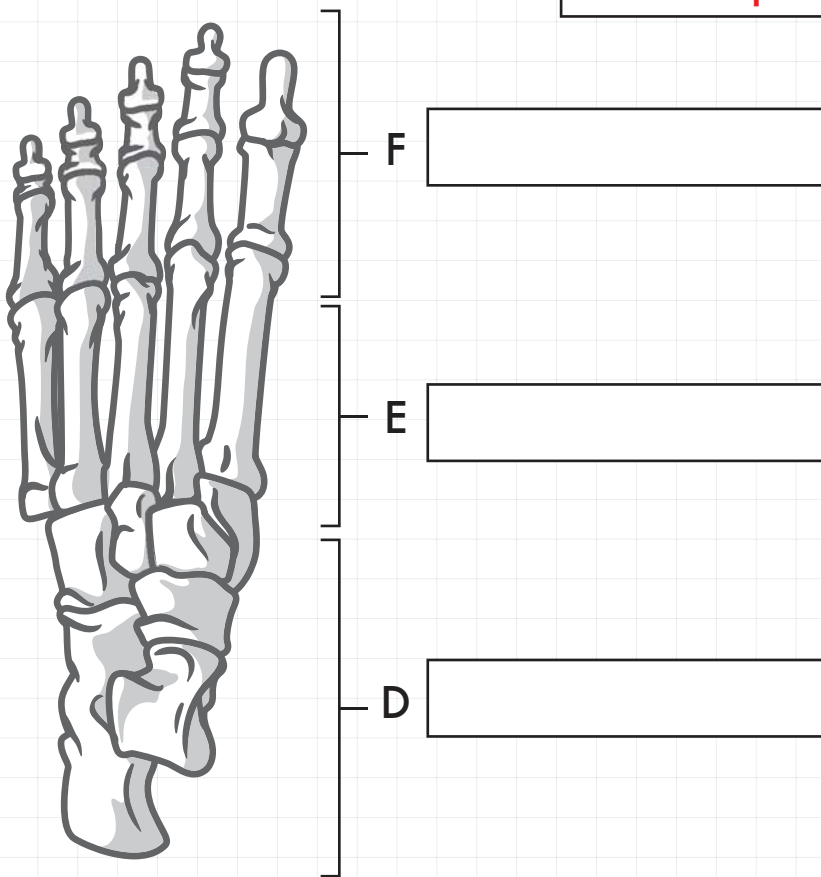
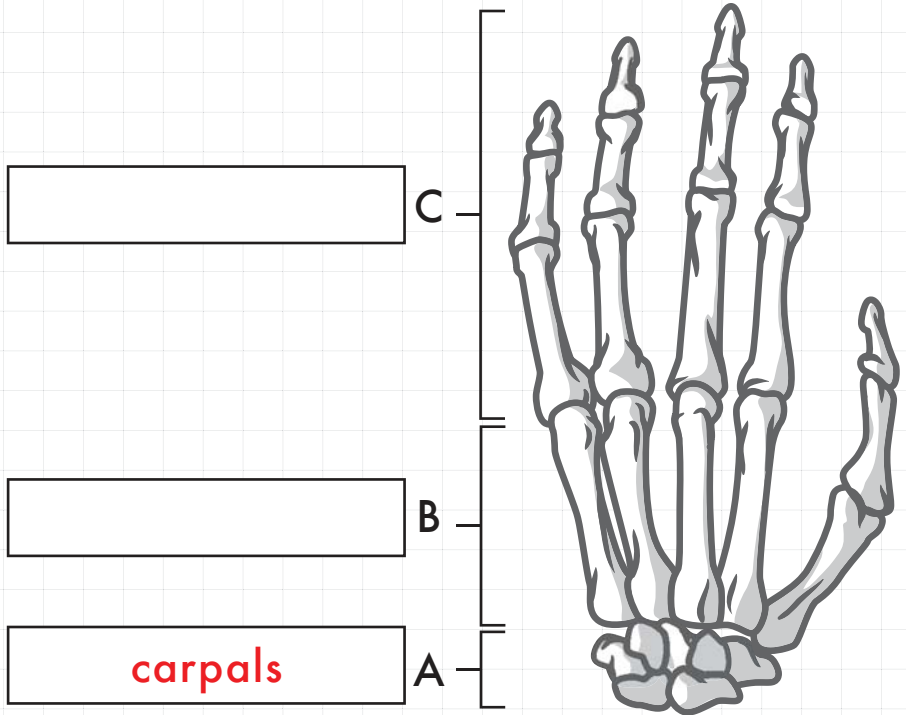


# the BONE ZONE

## Hands & Feet

Write the correct label for each bone in the given box. Refer to the clipboard for the bones' names.

- A. Carpals (wrist)
- B. Metacarpals (palm bones)
- C. Phalanges (finger bones)
- D. Tarsals
- E. Metatarsals
- F. Phalanges (toe bones)



**FACT:** With 26 bones in each foot and 27 bones in each hand, over half of our bones are in our hands and feet!

